



Port St. Maarten A.C. Wathey Cruise & Cargo Facilities, J. Yrausquin Boulevard  
 P.O. Box 5185, Harbor Village Suite #13A Pointe Blanche St. Maarten  
 TEL: +1 721 542 8503, 542 8504 | FAX: +1 721 542 8506  
 buzz@portofstmaarten.com | www.portstmaarten.com

DAM  
&  
PARTNERS  
CARIBBEAN



**Grand Opening**  
**Saturday September 19<sup>th</sup>**  
**from 7 am until**



Come out and Celebrate with Us  
 in Reinventing Cruise St. Maarten.

Entertainment all day, food and drinks on sale.  
 Front Street next to Sea Palace



supported by



**Walter "Plantz" Williams  
1915 - 2010**

The Walter Plantz Square at Down Street will generate a new spirit of life into the Down Street area for locals and visitors alike. It will be an anchor project to stimulate economic development in this unique part of town. The downtown neighbourhood still has many original monuments. The square comprising of seven colourful buildings, surrounding a large playful fountain, and shaded with palm trees, creates the feeling of an outdoor living room. These gingerbread buildings mimic the historical St. Maarten homes. They are constructed according to the original St. Maarten architecture, but have the most modern and outstanding interiors. The square will offer visitors various cuisine along with soft St. Maarten and Caribbean music from an integrated sound system during the day, evenings and on holidays, and is open for residents and visitors. It has been designed to reflect the national cultural heritage of the destination which is part and parcel of Port St. Maarten's reinventing cruise tourism.

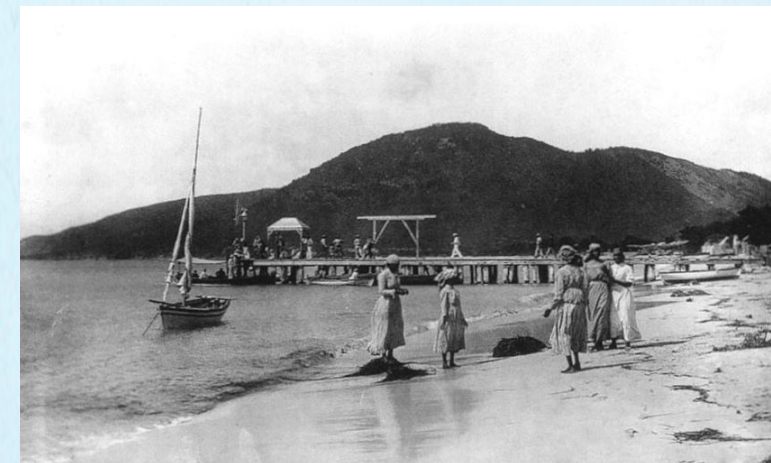
Each gingerbread building has been adorned with the name of one of the country's bays.



**Simpson Bay** - Well known for fishing and maritime heritage and a cornerstone of the island.



**Oyster Bay** - Represents two nations living together, French and Dutch; sharing the inland waterway.



**Great Bay** - Capital city of Philipsburg and representing the seat of Government and Commerce including the historical salt pans.



**Little Bay** - Fort Amsterdam played a key role in the defence of the island - Pieter Stuyvesant's attack of 1644.

**Guana Bay** - Is a traditional sea turtle nesting area.



**Cole Bay** - The village was the historical settlement of early times and meets our energy needs of today.



**Back Bay** - Rough cliffs and scenic views of the neighbouring islands of St. Barths, St. Kitts & Nevis, St. Eustatius and Saba.



**Mullet Bay** - Represents the crystal blue open Caribbean Sea and inland pond where the sharing of experiences of recreation and nature preservation take place.

